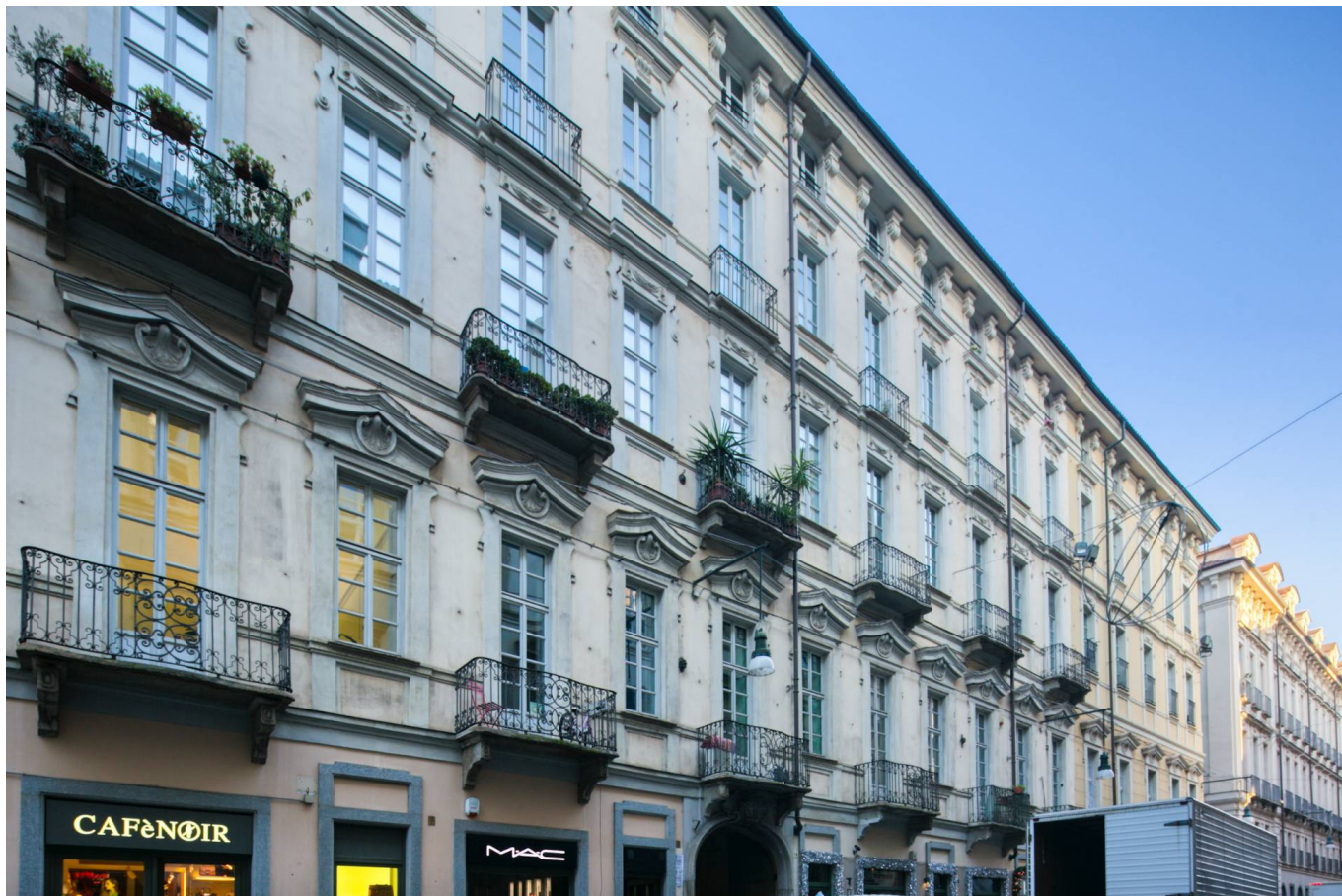


## Apartment in Sell to Torino Area: Centro



### 242 sm | Bathrooms: 1 | Bedrooms: 4 | Rooms: 7

Via Garibaldi, a few meters from Piazza Castello and Piazza Solferino, prestigious apartment on the first floor of an elegant building from the late 1700s in cadastral category A/2.

The apartment, generously sized and in excellent condition, boasts iroko parquet flooring, noble decorated and frescoed ceilings, and wooden window frames with double glazing, and is composed of an entrance hall, dining room with first access to the balcony overlooking the internal courtyard, living room with travertine fireplace and access to a delightful balcony overlooking the street.

The living area is completed by a study, a very large eat-in kitchen with a second access to the balcony on the internal courtyard, with the possibility of creating a second bathroom as was originally present before the renovation. The sleeping area consists of three large bedrooms, each with access to the balconies overlooking the street and a bathroom with a third access to the balcony on the internal courtyard. The heating is independent, and the condominium fees are low, despite the presence of the concierge.

The internal courtyard of the building, a quiet and picturesque corner in the heart of Turin, is characterized by historic shops. Two parking spaces are also available in an adjacent silo, in via Bellezia 5, with separate request. A large cellar completes the property.

### Property information

**Ref.:** H 115634

**Reason:** Sell

**Type:** Apartment

**Region:** Piemonte

**Province:** Torino

**Municipality:** Torino

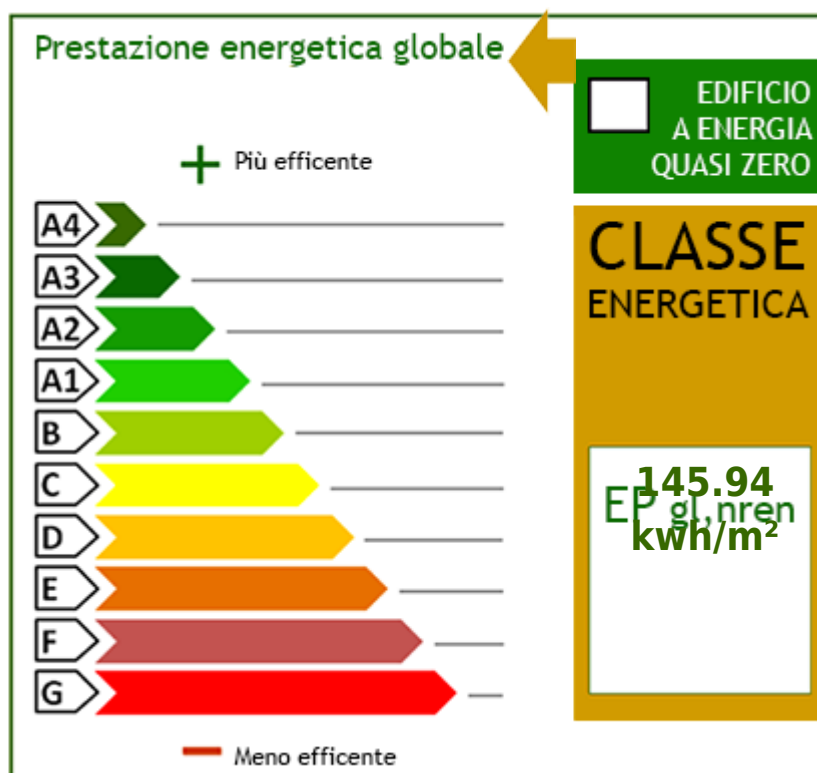
<b>Area:</b> Centro	<b>Price:</b> € 890.000
<b>Total sq.m.:</b> 242 sm	<b>Bedrooms:</b> 4
<b>Bathrooms:</b> 1	<b>Rooms:</b> 7
<b>Total Floor:</b> 4	<b>Lift:</b> Yes
<b>Age Construction:</b> 1790	<b>Condo fee::</b> € 140

### Characteristics

Fireplace	Air-Conditioned	Parquet
Wooden Window Frames		

### Nearby

Gyms	Spa	Fitness Centers	Bike Lanes
Playgrounds	Railway Station	Public Transport	Kindergarten
Elementary Schools	Schools	High Schools	Cafe
Post Offices	Municipal Offices		

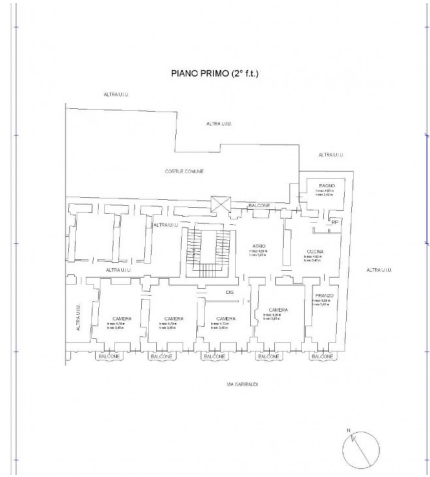












SUPERFICIE INTERNA LORDA  
 PIANO 208,40 m<sup>2</sup>  
 ZONE ESCLUSE: BALCONE 2,3 m<sup>2</sup> BALCONE 2,9 m<sup>2</sup> BALCONE 2,6 m<sup>2</sup> BALCONE 2,1 m<sup>2</sup>  
 BALCONE 2,1 m<sup>2</sup>  
 SUPERFICIE TOTALE: 196,4 m<sup>2</sup>  
 I VALORI E LE DIMENSIONI SONO APPROXIMATIVE E POSSONO VARIARE IN ALCUNE CASE

