

in Sell to Torino Area: Centro



250 sm | Bathrooms: 2 | Rooms: 3

Commercial property rented to business yielding 8% per year - Central location in front of Mole Antonelliana -

Located in a renovated period building overlooking a busy pedestrian area, 258 m2 shop on 3 levels.

Consisting of a 30 m2 shop with a window connected by a large staircase to the 180 m2 floor below for commercial/shop/office purposes, equipped with an air handling unit (UTA) for the exchange required by law; another 30 m2 mezzanine floor suitable for an office or relaxation area.

It is equipped with a convenient loading/unloading area with access from the garage and passable with a pallet truck;

In order in the systems and equipped with double services,

Leased to a commercial activity that generates high profitability.

Certificates

Energy Class:

EPI: 175 kwh/m²

Property information

Ref.: H 115673

Reason: Sell

Type:

Region: Piemonte

Province: Torino**Municipality:** Torino**Area:** Centro**Price:** € 229.000**Total sq.m.:** 250 sm**Bathrooms:** 2**Rooms:** 3**Number Of Windows:** 1**Condo fee:** € 60**Nearby**

Gyms

Spa

Bike Lanes

Playgrounds

Public Transport

Kindergarten

Elementary Schools

Schools

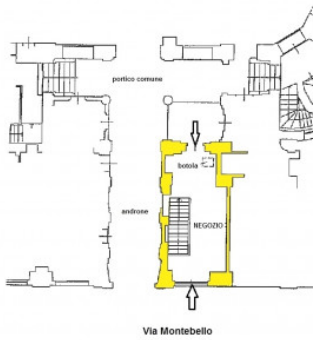
High Schools

Cafe

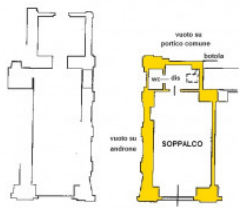
Post Offices

Shopping Centers

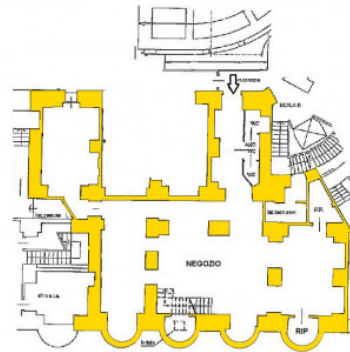
Municipal Offices



Via Montebello
PIANTA PIANO TERRENO (1° f.l.)
Hm = mt 3,00



Via Montebello
PIANTA PIANO TERRENO SOPPALCATO (2° f.l.)
Hm = mt 2,00



sottosuolo
Via Montebello
PIANTA PIANO PRIMO INTERRATO
Hm = mt 3,45





